



# PREMIER

## OUTDOOR & MARINE ROLL-OUT FLOORING

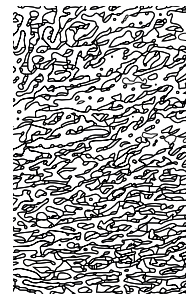
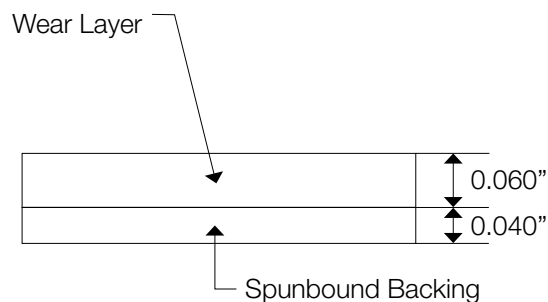
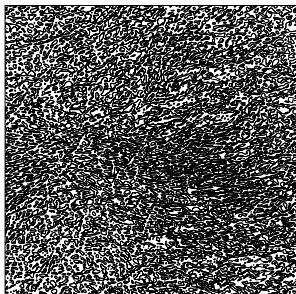
### Product Description

Achieve timeless elegance without the expense and maintenance of real wood with the G-Floor® Outdoor & Marine Premier Collection of faux teak and other stylish light, dark, and weathered woodgrains. Unlike wood, G-Floor Outdoor & Marine flooring resists water, UV-rays, stains, odors, scratching, blushing and more.

### Product Information (all sizes and weights are nominal)

<b>Surface Texture:</b>	Levant™	<b>Composition:</b>	Homogeneous Polyvinyl
<b>Overall Thickness:</b>	100 mil (0.100")	<b>Weight:</b>	6 oz/sqft
<b>Wear Layer Thickness:</b>	60 mil (0.060")	<b>Installation Method:</b>	Secured, Glue Down
<b>Stock Sizes:</b>	8 ft 6 in wide cut to length up to 75 ft	<b>Maintenance Options:</b>	Mild Soap, Vinyl safe cleaner
		<b>Warranty:</b>	Limited Lifetime Warranty See warranty for more details.
			<b>Made in the USA</b>

### Product Structure (all measurements are nominal; not to scale)



Better Life Technology® stands behind the quality of this product. Better Life Technology® cannot, however, guarantee the finished results because Better Life Technology® exercises no control over individual operating and production procedures. While technical information and advice on the use of this product is provided in good faith, the user bears sole responsibility for selecting the appropriate product for their end use requirements. Users are also responsible for testing to determine that our product will perform as expected during the printed item's entire life cycle from printing, post print processing, and shipment to end use. This product has been specially formulated for screen and digital printing, and it has not been tested by any other method. Any liability associated with the use of this product is limited to the value of the product purchased from Better Life Technology®.



# PREMIER

## OUTDOOR & MARINE ROLL-OUT FLOORING

### Testing Data

DESCRIPTION	STANDARDS	REQUIREMENTS	RESULTS
<b>Performance Specifications</b>			
Abrasion resistance	ASTM D4060	< 1.0 gm loss	Pass
Chemical Resistance	ASTM F925	No more than "Slight Change"	Pass
Dimensional stability	ASTM F2199	≤ 0.020"/Linear Foot	Pass
Edge Lift	EN 433	≤ 1.5"	Pass
Flexibility	ASTM F137	> 1.5"	Pass
Heat Resistance	ASTM F1514	Average & Max ΔE < 8.0	Pass
Light Resistance	ASTM F1515	Average & Max ΔE < 8.0	Pass
Moisture Resistance	-	-	Pass
Puncture Resistance	EN 388	≥ 50 lbf	Pass
Residual Indentation	ASTM F1914	≤ 0.007"	Pass
Short-Term Indentation	ASTM F970	≤ 0.005"	Pass
Slip Resistance	ASTM D2047	≥ 0.5	Pass
Static Load Resistance	ASTM F970	±0.005", 250-Lbs. Load	Pass

<b>Fire Specifications</b>			
Critical Radiant Flux	ASTM E648	Class I: ≥ 0.45 W/cm <sup>2</sup>	Pass
Federal Motor Vehicle Safety	Standard #302	-	Pass
Flame Spread	FMVSS 302	≤ 102 mm/Minute	Pass
Flammability	ASTM D2859	Not to extend within 1.0"	Pass
Smoke density	ASTM E662	Flaming & Non-Flaming ≤ 450	Pass

<b>Environmental Specifications</b>			
Fungi Resistance:	ASTM G-21	≤ 2	Pass
Low VOC Emissions	-	-	Pass
Recycling	-	-	Suitable

**⚠ WARNING:** Cancer and Reproductive Harm – [www.P65Warnings.ca.gov](http://www.P65Warnings.ca.gov).